

Ref. : VP 5448-04.pas

Rev. : A

Date : 28/08/2009

Page : 1/1

# BUTTERFLY VALVE WITH ELECTRIC ACTUATOR

## VP 5448-04



ROBINETTERIE INDUSTRIELLE ET ACCESSOIRES  
INDUSTRIAL VALVES AND ACCESSORIES

### APPLICATION

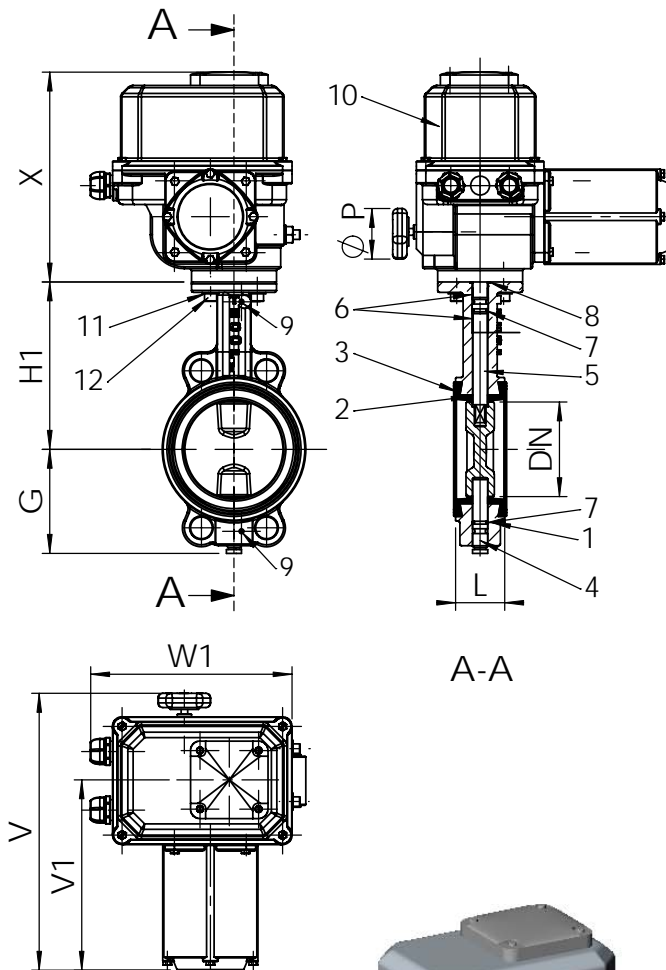
General use : water, air, acids etc.

### GENERAL CHARACTERISTICS

Design in accordance with NF EN 593.  
Tightness in both ways. NF EN 12266-1, ISO 5208, DIN 3230.  
Sleeves body in dovetail shape ensures a perfect assembling (for high vacuum we can stick it).  
Stem: high and low semi stem giving a high flow coefficient.  
Machined disc on periphery giving a low and regular torque.  
Stem unejectable.  
Bearing: stainless steel teflon lined and dovetail type sleeve.  
Normally, the butterfly valve is equipped with an electric actuator "Bernard".

### CONSTRUCTION

12	4	Screw CHC	SS A2	
11	4	Washer	SS A2	
10	1	Electric actuator	Aluminium	
9	2	Split pin	SS	
8	1	Gasket	NBR	
7	2	O-ring	NBR	
6	2	Guiding bearing	Teflon-lined c/s	
5	1	Upper stem	Stainless steel AISI 416	DIN: 1.4005 ASTM: AISI 416 BS: 416 S 21
4	1	Lower stem	Stainless steel AISI 416	DIN: 1.4005 ASTM: AISI 416 BS: 416 S 21
3	1	Sleeve	Heat EPDM	
2	1	Disc	Ductile iron EN-GJS-400-15	DIN: GGG 40 ASTM: A536 65-45-12 BS: 1563 JS-1030
1	1	Body	Steel GP240GH	DIN: GS-C25 ASTM: A216 Grade WCA BS: 161 Grade B
<b>Rep.</b>	<b>Nb.</b>	<b>Designation</b>	<b>Material</b>	



### DIMENSIONS

DN	Electric actuator	G	H1	L	X	V	V1	W1	ØP	Type	Weight * (kg)
40 - 1" 1/2	Mono / 1 ph OA3	66	134	33	224	264	148	190	90	F07	8,2
	376					260					
50 - 2"	Mono / 1 ph OA3	72	140	43	224	264	148	190	90	F07	8,9
	376					260					
65 - 2" 1/2	Mono / 1 ph OA3	78	153	46	224	264	148	190	90	F07	9,5
	376					260					
80 - 3"	Mono / 1 ph OA3	89	159	46	224	264	148	190	90	F07	10,1
	376					260					
100 - 4"	Mono (ou/or) OA6	102	178	52	224	376	260	190	90	F07	11,6
125 - 5"	Mono (ou/or) OA8	117	190	56	224	376	260	190	90	F07	14,4
150 - 6"	Mono (ou/or) OA15	130	203	56	224	376	260	190	90	F07	15,6
200 - 8"	Mono (ou/or) AS18	159	238	60	177	479	312	315	100	F10	31,6
250 - 10"	Mono (ou/or) AS50	190	268	68	177	509	340	315	250	F10	41,0
300 - 12"	Mono (ou/or) AS50	222	306	78	177	509	340	315	250	F10	51,4

\* Weight = Valve + electric actuator

### STANDARDS

Product in accordance to european directive "Pressure equipments" N° 97/23/CE: fluids category III modulate H.  
Face to face according to standard EN 558-1 serie 20, ISO 5752 serie 20 and DIN 3202.  
Face to face PN 10 and PN 16 according to EN1092-1, BS450. Adjusting to B16.50 ASA 150.

### WORKING CONDITIONS

Maximum working pressure : 16 bar.  
Working temperature : - 15 °C / + 130 °C.  
Minimum and maximum temperature : -30°C / + 150°C.  
Electric actuator protection according to the standard IP67 (Another on request).

Pressure test according to standards EN 12266-1, DIN 3230, BS 6755 and ISO 5208 :  
Body : 24 bar.  
Seat : 17,6 bar.

5, impasse Pascal - Z.I. - BP 177 - 69686 CHASSIEU Cedex - FRANCE  
Tél. +33 (0) 4 72 79 05 79 - Fax +33 (0) 4 78 90 19 19 / +33 (0) 4 72 79 05 70  
E-mail : tecofi@tecofi.fr - Service commercial / Sales dep. : sales@tecofi.fr - www.tecofi.fr