

Ref. : BS 1240.pas

Rev. : Initial

Date : 04/09/08

Page : 1/1

FULL BORE FLANGED BRASS BALL VALVE

BS 1240



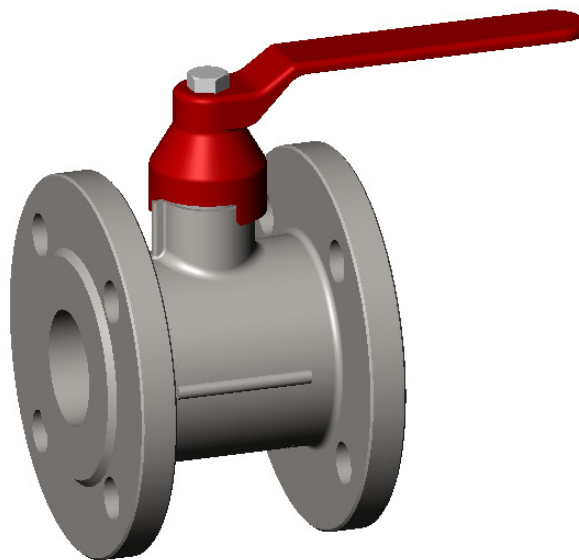
ROBINETTERIE INDUSTRIELLE ET ACCESSOIRES
INDUSTRIAL VALVES AND ACCESSORIES

APPLICATION

General uses : Industrial water supplies, heating/ ventilation plants, industrial, agricultural sector, chemical and naval uses.

GENERAL CHARACTERISTICS

Cast iron GG25 body, Heavy chromed brass ball.
ISO flanged ends PN 10/16.
Operating by steel lever, 1/4 turn - PN 16.
Sealing of the axis by packing flanged.



CONSTRUCTION

7	2	Flange	Brass	
6	1	Handling	Steel	
5	1	Packing gland	PTFE	
4	2	Seat	PTFE	
3	1	Stem	Brass	DIN: CuZn36Pb3 ASTM: B16 C36000 BS: 12164 CZ124
2	1	Ball	Brass	
1	1	Body	Brass	
Pos.	Qty.	Description	Material	

DIMENSIONS

DN		L	H	P	Weight (kg)
mm	inch				
15	1/2"	65	70	140	1,40
20	3/4"	80	70	140	1,80
25	1"	85	90	165	2,50
32	1" 1/4	100	100	165	3,62
40	1" 1/2	110	110	200	4,76
50	2"	125	120	200	6,50
65	2" 1/2	140	130	240	8,90
80	3"	150	145	240	11,85
100	4"	170	170	320	15,60

WORKING CONDITIONS

Maximum working pressure : 16 bar.

Maximum temperature : +100°C.

AGREEMENT AND TESTING

Pressure test according to standards
EN 12266-1, DIN 3230, BS 6755 and ISO 5208 :

Body : 24 bar.

Seat : 17,6 bar.

