

Ref. : BS 6379.pas

Rev. : B

Date : 21/12/2009

Page : 1/1

# STAINLESS STEEL 3 PIECES FULL BORE BALL VALVE PN64

## BS 6379



ROBINETTERIE INDUSTRIELLE ET ACCESSOIRES  
INDUSTRIAL VALVES AND ACCESSORIES

### APPLICATION

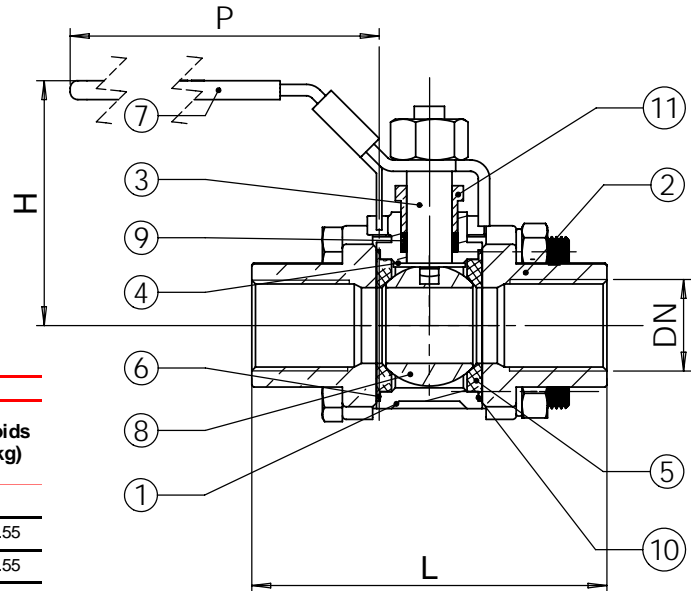
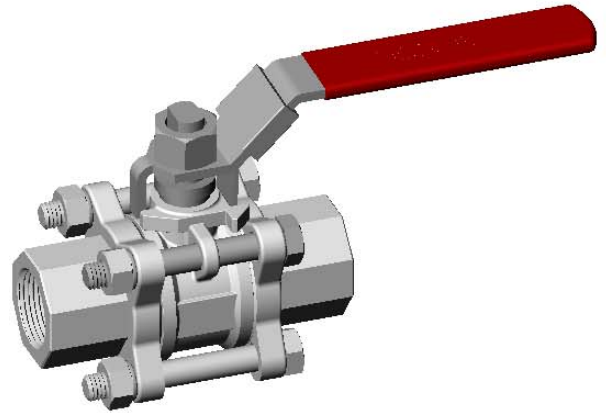
All chemical fluid, liquid steam, gas, etc.

### GENERAL CHARACTERISTICS

3 pieces stainless steel body, stem and ball - PTFE seat.  
BSP threaded ends or BW-SW - Full bore.  
Operating by stainless steel lever with locking devise - PN 64.

### CONSTRUCTION

11	1	Nut packing	Stainless steel	
10	1	Body gasket	PTFE	
9	1	Packing	PTFE	
8	1	Ball	Stainless steel 316 GX5CrNiMo 19-11-2	DIN: G-X6CrNiMo18 10 ASTM: A 351 Grade CF8M BS: 1504 316 C16
7	1	Handle	Stainless steel	
6	2	Body gasket	PTFE	
5	2	Seat	PTFE	
4	1	Stem gasket	PTFE	
3	1	Stem	Stainless steel 316 X5CrNiMo 17-12-2	DIN: X5CrNiMo18 10 ASTM: A 182 AISI 316 BS: 970 316 S165
2	2	Ends	Stainless steel 316 GX5CrNiMo 19-11-2	DIN: G-X6CrNiMo18 10 ASTM: A 351 Grade CF8M BS: 1504 316 C16
1	1	Body	Stainless steel 316 GX5CrNiMo 19-11-2	DIN: G-X6CrNiMo18 10 ASTM: A 351 Grade CF8M BS: 1504 316 C16
Pos.	Qty.	Description	Material	



### DIMENSIONS

DN		BSP F/F - BW					SW			
Mm	inc h	L (BSP F-F)	L (BW)	H	P	Poids (kg)	L	H	P	Poids (kg)
8	1/4"	59	52	108	0,39					
12	3/8"	60	52	108	0,41	60	48.3	120	0.55	
15	1/2"	65,5	63	113	0,55	75	48.3	120	0.55	
20	3/4"	76,5	68	113	0,80	80	54	120	0.75	
25	1"	86,2	79	135	1,20	90	57.5	148	1.05	
32	1 1/4"	103,1	88	135	1,90	110	66.5	148	1.8	
40	1 1/2"	118	97	160	2,35	120	77.3	178	2.45	
50	2"	131,5	108	160	3,90	140	85	178	3.9	
65	2 1/2"	164,5	174.5	128	230	8,30	185	122	325	9.87
80	3"	182,7	192.7	140	230	12,30	205	128.5	325	13.18
100	4"	229,6	239.6	172	335	18,70	240	158	325	23.6

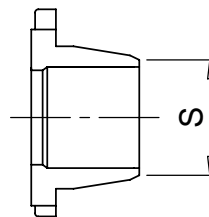
### WORKING CONDITIONS

Maximum working pressure : 64 bar  
Temperature : + 100°C  
Maximum temperature : + 150°C

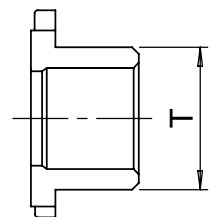
Pressure test according to standards  
EN 12266-1, DIN 3230, BS 5154 and ISO 5208 :  
Body : 96 bar  
Seat : 70 bar

### STANDARDS

Ends connections : BSP threaded (ISO 228-1),  
butt welding or socket welding.



Socket Welding



Butt Welding