

Ref. : VP 3449-08.pas

Rev. : Initial

Date : 22/05/07

Page : 1/1

BUTTERFLY VALVE WITH GEAR BOX

VP 3449-08



ISO 9001 : 2000

Certifié par



ROBINETTERIE INDUSTRIELLE ET ACCESSOIRES
INDUSTRIAL VALVES AND ACCESSORIES

APPLICATION

General use : Water, air, acids etc.

GENERAL CHARACTERISTICS

Design in accordance with NF EN 593.

TECFLY: type with lugs enabling use on bottom line.

Tightness in both ways.

Two kinds of sleeves:

- Body in dovetail shape ensures a perfect assembling
(for high vacuum we can stick it)

- Internally reinforced resin sleeve giving a lower torque

Stem: high and low semi stem giving a high flow coefficient.

Machined disc with on periphery giving a low and regular torque.

Stem unejectable, bearing: stainless steel teflon lined.

Dovetail type sleeve, accordind to ISO 5211.

CONSTRUCTION

12	4	Screw	Stainless steel	
11	4	Washer	Stainless steel	
10	1	Gear box	Cast iron	
9	2	Split pin	Stainless steel	
8	1	Gasket	NBR	
7	2	O-Ring	NBR	
6	2	Guiding bearing	Teflond-lined	
5	1	Upper stem	Stainless steel 316	DIN: X5CrNiMo 18 10 ASTM : AISI 316 BS : 316 S16
4	1	Lower stem	Stainless steel 316	DIN: X5CrNiMo 18 10 ASTM : AISI 316 BS : 316 S16
3	1	Sleeve	Heat EPDM	Standard
2	1	Disc	GX5CrNiMo19-11-2	DIN: G-X6CrNiMo18 10 ASTM: A351 Grade CF8M BS: 1504 316 C16
1	1	Body	Cast iron EN-GJL-250	DIN : GG25 ASTM : A48 class 40B BS : 1452 Grade 250
Pos.	Qty.	Description	Material	

DIMENSIONS

DN		H	H1	L	G	ØP	V	TYPE	Weight (kg)
mm	inch								
50	2"	255	140	43	71	150	148	F07	8
65	2"1/2	268	153	46	78	150	148	F07	8.6
80	3"	274	159	46	89	150	148	F07	9.2
100	4"	293	178	52	102	150	148	F07	10.6
125	5"	305	190	56	117	300	148	F07	12.4
150	6"	318	203	56	130	300	148	F07	13.9
200	8"	430	238	60	159	300	238	F10	26.9
250	10"	460	268	68	190	300	238	F10	36.9
300	12"	495	306	78	222	300	226	F10	47.3

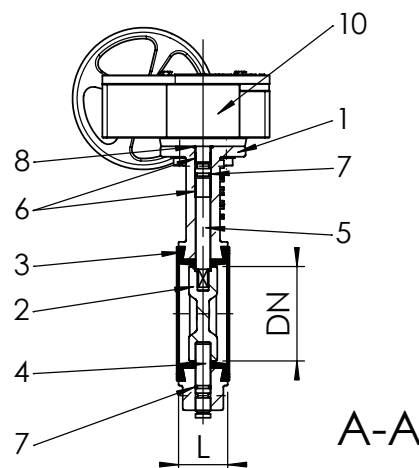
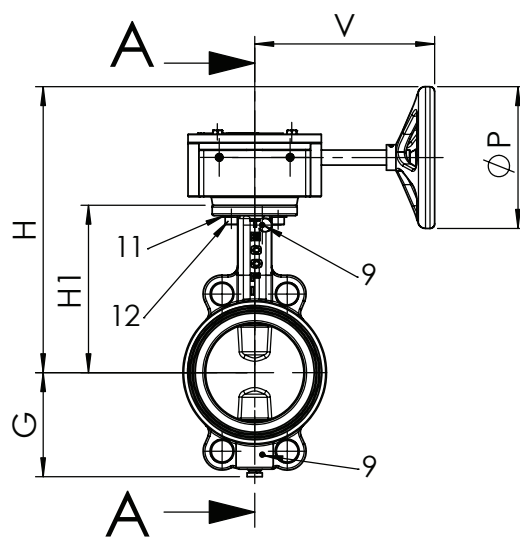
CONDITIONS DE SERVICE

Maximum working pressure : 16 bar.

Maximum temperature : -15°C / +130°C.

Peak temperature : -30°C / +150°C.

Tightness in option	Maximum temperature	Peak temperature
EPDM	+4°C / +110°C	-20°C / +130°C
CSM (Type Hypalon®)	+4°C / +80°C	-20°C / +110°C
FPM (Type Viton®)	-10°C / +170°C	-20°C / +200°C
Silicone	-20°C / +170°C	-40°C / +200°C
Nitrile (NBR)	-10°C / +80°C	-20°C / +90°C



STANDARDS

Manufacture according to the requirements of the European directive 97/23/CE «Equipments under pressure» : fluids category III modulate H.

Pressure test according to standards

EN 12266-1, DIN 3230, BS 6755 and ISO 5208 :

Body : 24 bar.

Seat : 17,6 bar.

Face to face according to standard NF EN 558-1 serie 20, ISO 5752 serie 20, DIN 3202.

Mounting between flanges PN10 / PN16 : according to EN 1092-2, BS450, ANSI B16.1-5.

Adjustable between flanges ASA 150 on request.

5, impasse Pascal - Z.I. - BP 177 - 69686 CHASSIEU Cedex - FRANCE
Tél. +33 (0) 4 72 79 05 79 - Fax +33 (0) 4 78 90 19 19 / +33 (0) 4 72 79 05 70

E-mail : tecofi@tecofi.fr - Service commercial / Sales dep. : sales@tecofi.fr - www.tecofi.fr