

Ref. : VP 6449-08.pas

Rev. : initial

Date : 09/10/2007

Page : 1/1

BUTTERFLY VALVE WITH GEAR BOX

VP 6449-08



ISO 9001 : 2000

Certifié par



ROBINETTERIE INDUSTRIELLE ET ACCESSOIRES
INDUSTRIAL VALVES AND ACCESSORIES

APPLICATION

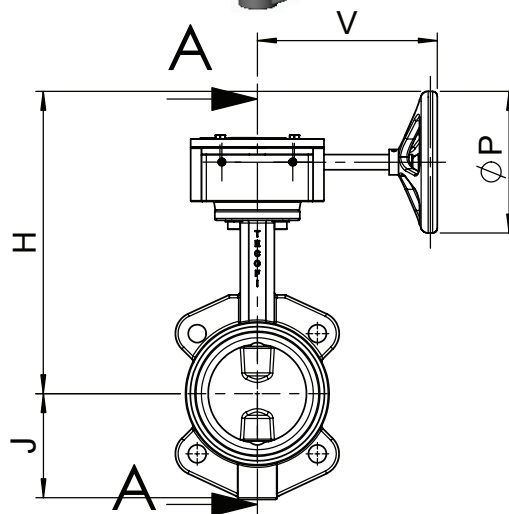
General use : Water, air, acids etc.

GENERAL CHARACTERISTICS

Design in accordance with NF EN 593.
TECFLY: type with lugs enabling use on bottom line.
Tightness in both ways.
Sleeve internally reinforced resin sleeve giving a lower torque
Stem: high and low semi stem giving a high flow coefficient.
Machined disc with on periphery giving a low and regular torque.
Stem unejectable, dovetail type sleeve, accordind to ISO 5211.

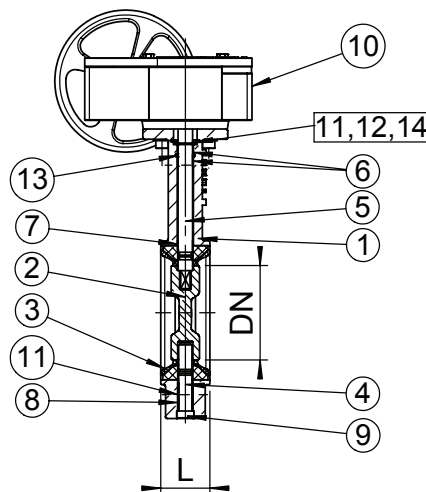
CONSTRUCTION

14	1	Circlips	Steel	
13	1	Ring	NBR	
12	1	Split ring	Zinc steel	
11	1	Disc	Zinc steel	
10	1	Gear box	Fonte	
9	1	Screw plug	Zinc steel	
8	1	Bushing	Nylon	
7	1	Bushing	PTFE + fibers glass	
6	2	Bushing	PTFE + fibers glass	
5	1	Upper shaft	Stainless steel 304	DIN: X5CrNi 18 10 ASTM : A 182 AISI 304 BS : 1449-2 304 S15
4	1	Lower shaft	Stainless steel 304	DIN: X5CrNi 18 10 ASTM : A 182 AISI 304 BS : 1449-2 304 S15
3	1	Sleeve	Heat EPDM	
2	1	Disc	Stainless steel 316	DIN: X5CrNiMo 18 10 ASTM : AISI 316 BS : 316 S16
1	1	Body	Stainless steel CF8M	DIN: G-X6CrNiMo18 10 ASTM : A 351 Grade CF8M BS : 1504 316 C16
Pos.	Qty.	Description	Material	



DIMENSIONS

DN		L	H	J	V	P	Weight (kg)
mm	inch						
40	1"1/2	33	249	65	148	150	7,4
50	2"	42	255	80	148	150	8,1
65	2"1/2	44,6	268	82	148	150	8,7
80	3"	45,2	274	95	148	150	9,3
100	4"	52	293	108	148	150	10,8
125	5"	54,4	306	127	148	150	16,2
150	6"	55,8	318	149	148	150	17,7
200	8"	60,6	428	175	238	300	27,9
250	10"	65,5	458	203	238	300	36,3
300	12"	76,8	496	242	238	300	46,7



WORKING CONDITIONS

Maximum working pressure : 16 bar.
Maximum temperature : -15°C / +130°C.
Peak temperature : -30°C / +150°C.

Tightness in option	Maximum temperature	Peak temperature
EPDM	+4°C / +110°C	-20°C / +130°C
CSM (Type Hypalon®)	+4°C / +80°C	-20°C / +110°C
FPM (Type Viton®)	-10°C / +170°C	-20°C / +200°C
Silicone	-20°C / +170°C	-40°C / +200°C
Nitrile (NBR)	-10°C / +80°C	-20°C / +90°C

A-A

STANDARDS

Pressure test according to standards
EN 12266-1, DIN 3230, BS 6755 and ISO 5208 :
Body : 24 bar.
Seat : 17,6 bar.
Face to face according to standard NF EN 558-1 serie 20,
ISO 5752 serie 20, DIN 3202.
Mounting between flanges PN10 / PN16 : according to
EN 1092-2.

5, impasse Pascal - Z.I. - BP 177 - 69686 CHASSIEU Cedex - FRANCE
Tél. +33 (0) 4 72 79 05 79 - Fax +33 (0) 4 78 90 19 19 / +33 (0) 4 72 79 05 70
E-mail : tecofi@tecofi.fr - Service commercial / Sales dep. : sales@tecofi.fr - www.tecofi.fr