

Ref. : CB 6442.pas

Rev. : B

Date : 03/11/2009

Page : 1/1

WAFER TYPE DUAL PLATE CHECK VALVE

CB 6442



ISO 9001 : 2000

Certifié par



ROBINETTERIE INDUSTRIELLE ET ACCESSOIRES
INDUSTRIAL VALVES AND ACCESSORIES

APPLICATION

General uses: pumping, water supply, gas, air conditioning installation.

GENERAL CHARACTERISTICS

Range: From DN 40 to DN 800.

Mounting between flanges.

Working positions: horizontal and vertical ascending, and vertical descending position < DN 150.

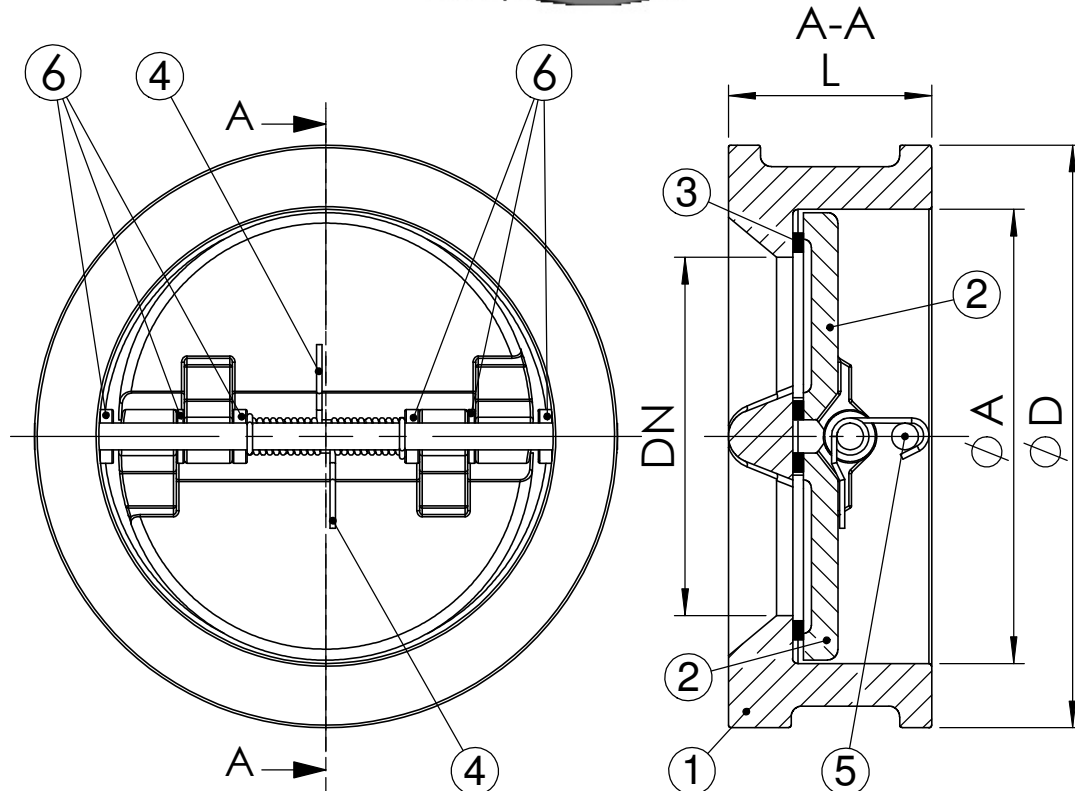
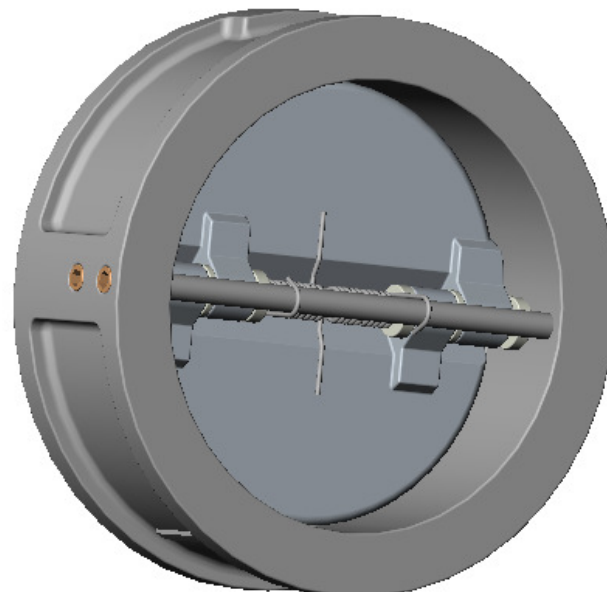
Mounting in accordance with many standards connections.

Low head loss.

Stainless steel spring technology to avoid fluid hammer.

CONSTRUCTION

6	6	Washer	Stainless steel AISI 316	DIN: X5CrNiMo 18 10 ASTM: AISI 316 BS: 316 S16
5	2	Stem	Stainless steel AISI 316	DIN: X5CrNiMo 18 10 ASTM: AISI 316 BS: 316 S16
4	2	Spring	Stainless steel AISI 316	DIN: X5CrNiMo 18 10 ASTM: AISI 316 BS: 316 S16
3	2	Gasket	FPM (Type Viton®) (DN 50-200) NBR (DN 250-400)	
2	2	Plate	Stainless steel AISI 316	DIN: X5CrNiMo 18 10 ASTM: AISI 316 BS: 316 S16
1	2	Body	Stainless steel AISI 316	DIN: X5CrNiMo 18 10 ASTM: AISI 316 BS: 316 S16
Rep.	Qty.	Description	Material	



DIMENSIONS

DN		L	Ø A	Ø D	Weight (kg)
mm	inch				
50	2"	54*	60	109	2,0
65	2"1/2	54*	73	129	3,0
80	3"	57*	89	144	4,0
100	4"	64	114	164	5,0
125	5"	70	141	194	7,0
150	6"	76	168	220	9,0
200	8"	89	-	275	15
250	10"	114	-	330	25
300	12"	114	-	380	34
350	14"	127	-	440	53
400	16"	140	-	491	68
450	18"	152	-	556	98
500	20"	152	-	620	115
600	24"	178	-	737	175
700	28"	229	-	807	258
800	32"	241	-	914	340

* DN 50-65-80 : Face to face EN 558-1 serie 50.

WORKING CONDITIONS

Minimum opening pressure : near to zero

Maximum working pressure : 16 bar.

Maximum temperature : +120 °C.

Pressure test according to standards

EN 12266-1, DIN 3230, BS 6755 and ISO 5208 :

Body : 24 bar.

Seat : 17,6 bar.

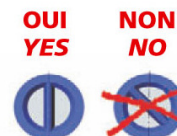
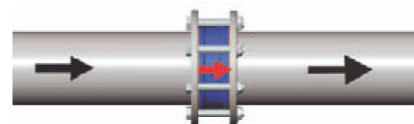
STANDARDS

Face to face according to standards NF EN 558-1 serie 16 and DIN 3202.

Mounting between flanges PN10/16 according to EN 1092-1.

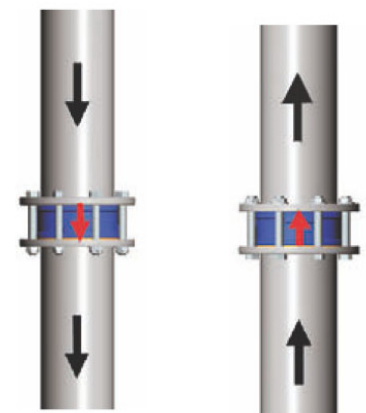
Horizontal

For assembling in horizontal position, check axis as to be placed in vertical position.



Vertical

To be assembled in vertical position the opening direction of the plates has to be in accordance to the direction of the fluid



Descending flow
DN < 150

Ascending Flow