

Ref. : BS 1158.pas

Rev. : Initial

Date : 03/09/08

Page : 1/1

FULL BORE BALL VALVE

BS 1158



ROBINETTERIE INDUSTRIELLE ET ACCESSOIRES
INDUSTRIAL VALVES AND ACCESSORIES

APPLICATION

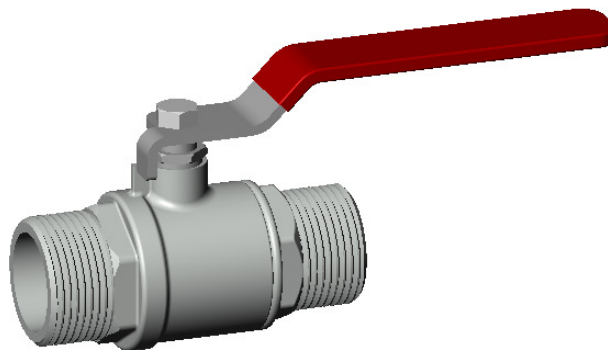
General use: for all kind of fluids.

GENERAL CHARACTERISTICS

From DN 3/8" to DN 2".
Full bore.
Sealing of the axis by packing flanged.
Flat handle.
Heavy model - Long filets.

CONSTRUCTION

6	1	Mobil body	Brass
5	1	Packing flanged	PTFE
4	2	Seat	PTFE
3	1	Stem	Brass
2	1	Ball	Chromed brass
1	1	Body	Nickeled brass
Pos.	Qty.	Description	Material



DIMENSIONS

DN		L	H	P	Weight (kg)
mm	inch				
12	3/8"	50,5	41,8	81,5	0,14
15	1/2"	57	45	81,5	0,19
20	3/4"	66,5	48	104	0,27
25	1"	75	57	102	0,39
32	1" 1/4	90,5	67,5	120	0,63
40	1" 1/2	104	73,5	120	0,86
50	2"	122,5	87,5	142	1,43

WORKING CONDITIONS

T max : +120 °C

PS max : DN 3/8" - 1" : 25 bar
DN 1"1/4 - 1"1/2 : 20 bar
DN 2" : 16 bar

AGREEMENT AND TESTING

BSP threaded according to standard ISO 228-1.

