

Ref. : VOC4241-08.pas

Rev. : Initial

Date : 18/12/08

Page : 1/1

RESILIENT SEAT GATE VALVE WITH GEARBOX PN10

VOC4241-08

F



ROBINETTERIE INDUSTRIELLE ET ACCESSOIRES
INDUSTRIAL VALVES AND ACCESSORIES

APPLICATION

General use : Water supply, fire protection, irrigation, water treatment.

GENERAL CHARACTERISTICS

Range : from DN450 to DN600.

Non rising stem.

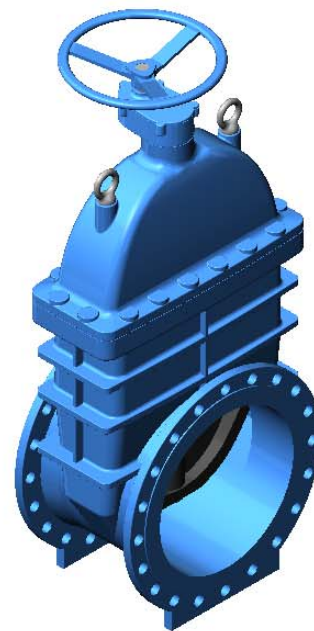
Clockwise to close.

No zone of retention.

Low head losses.

CONSTRUCTION

8	1	Hand wheel	Ductile iron	DIN: GGG40 ASTM: A536 65-45-12 BS: 1563 EN-JS1030
7	2	Hook	Steel	
6	1	Gearbox	Ductile iron	DIN: GGG40 ASTM: A536 65-45-12 BS: 1563 EN-JS1030
5	1	Stem	Stainless steel	
4	1	Bonnet	Ductile iron	DIN: GGG40 ASTM: A536 65-45-12 BS: 1563 EN-JS1030
3	1	Nut	Bronze	
2	1	Wedge	Ductile iron + EPDM	DIN: GGG40 ASTM: A536 65-45-12 BS: 1563 EN-JS1030
1	1	Body	Ductile iron	DIN: GGG40 ASTM: A536 65-45-12 BS: 1563 EN-JS1030
Pos.	Qty.	Description	Material	



DIMENSIONS

DN		L	H	Ø V	Ø D	Ø K	Ø G	f	B	n x d	Weight (kg)
mm	inch										
450	18"	330	1520	500	615	565	530	2	28	20 x 26	320
500	20"	350	1460	500	670	620	585	4	34	20 x 27	428
600	24"	390	1690	500	780	725	685	5	30	20 x 30	530

WORKING CONDITIONS

Maximum working pressure : 10bar.

Maximum temperature : -40°C / +120°C.

STANDARDS

Face to face according to EN558-1 serie 14 and DIN 3202 / F4.

Connection according to standard EN 1092-2 ISO PN10.

